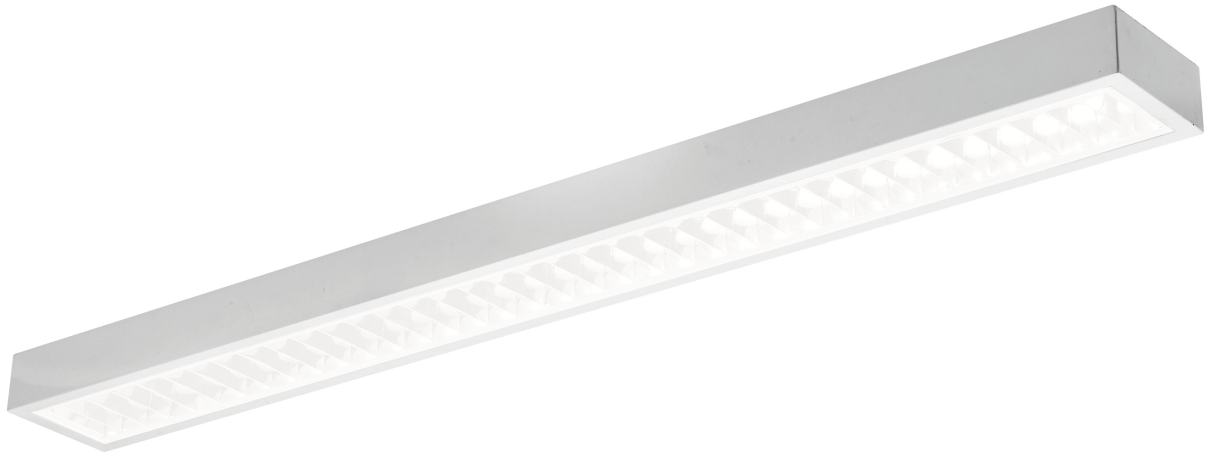


Illuminate Your Space: Discover the Hidden Benefits of LED Linear Ceiling Lights with Emergency Power!

In today's world, where energy efficiency and safety are paramount, [LED linear ceiling lights](#) have emerged as a popular choice for modern lighting solutions. These sleek fixtures not only provide ample illumination but also integrate innovative technology to enhance your living or working environment. One standout feature that sets these lights apart is their emergency battery power. This functionality ensures that even during unexpected power outages, you won't be left in the dark, providing a sense of security and peace of mind. Whether you're renovating your home, outfitting a new office, or simply looking to upgrade your lighting, understanding the benefits and features of LED linear ceiling lights with emergency battery options is essential.



Understanding LED Linear Ceiling Lights

LED linear ceiling lights are designed to deliver a long, narrow beam of light, making them an ideal choice for illuminating corridors, offices, and large rooms. Unlike traditional lighting options like incandescent or fluorescent fixtures, LED lights utilize light-emitting diodes to create illumination, which can drastically reduce energy consumption. This technology translates to lower electricity bills and a smaller carbon footprint. Additionally, LED lights are known for their longevity, often lasting up to 25,000 hours or more, which means fewer replacements and less waste. Their modern designs can seamlessly fit into various decor styles, offering both aesthetic appeal and functional lighting.

The Functionality of Emergency Battery Power

The emergency battery feature in LED linear ceiling lights is a game-changer for safety in any environment. When the power goes out, these lights automatically switch to battery mode, providing immediate illumination. Most systems use rechargeable batteries that charge while the light is powered on, ensuring they're ready for use when needed. Depending on the design, some lights may include battery backup systems that can last anywhere from a few hours to several, depending on the brightness level. This functionality is particularly important in critical settings like hospitals, schools, and public buildings, where safety and visibility during emergencies are non-negotiable.

Benefits of Using LED Linear Ceiling Lights with Emergency Power

Incorporating LED linear ceiling lights with emergency power into your space provides a multitude of benefits. Firstly, these lights offer substantial energy savings, as LEDs consume significantly less power compared to traditional lighting options. This not only reduces your energy bills but also lessens your environmental impact. Secondly, their installation is straightforward and can often be done without professional help, making them a versatile option for homeowners and business owners alike. Beyond practicality, the safety aspect cannot be overstated; having lights that automatically turn on during a power outage can prevent accidents and injuries. Lastly, their sleek design fits well in various settings, from residential homes to commercial spaces, making them a flexible lighting solution.

Choosing the Right LED Linear Ceiling Light with Emergency Power

When selecting the right LED linear ceiling light with emergency power, several key factors come into play. First, consider the brightness you require for your space; this is typically measured in lumens. Next, think about the color temperature; warmer tones create a cozy atmosphere, while cooler tones are more energizing. Installation options can vary, so assess whether you need surface-mounted or suspended fixtures. Additionally, pay attention to the battery life of the emergency system – the longer, the better for prolonged outages. Finally, look for features like dimming capabilities or smart home compatibility, which can

enhance the functionality of your lighting. Researching these aspects will help you find a solution that meets your needs without getting overwhelmed by the options available.

Enhancing Safety and Style with LED Linear Ceiling Lights

In summary, LED linear ceiling lights with emergency battery power are a valuable addition to any space, offering a blend of safety, efficiency, and modern design. Their ability to provide illumination during power failures can significantly enhance safety and peace of mind, making them an essential consideration for homeowners and businesses alike. Whether you prioritize energy savings or aesthetic appeal, these lights cater to a variety of needs. As we continue to embrace innovative lighting solutions, considering LED linear ceiling lights with emergency power could be a brilliant choice to illuminate your space effectively.